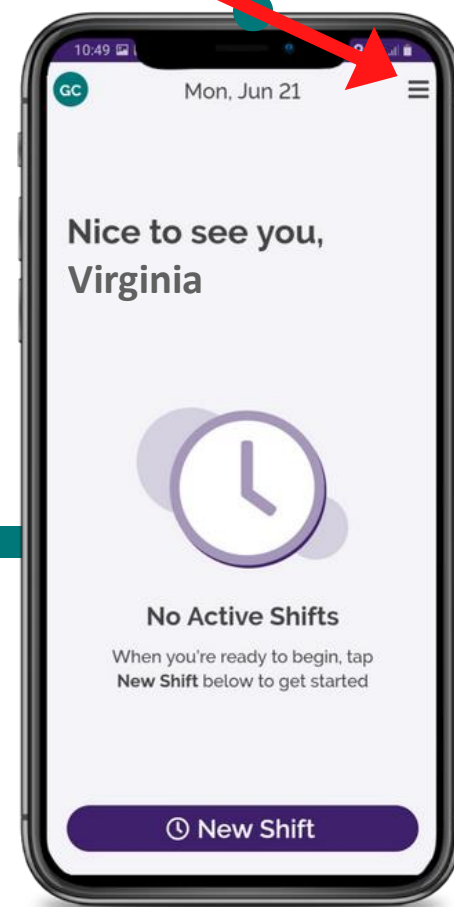


# The CareAttend App

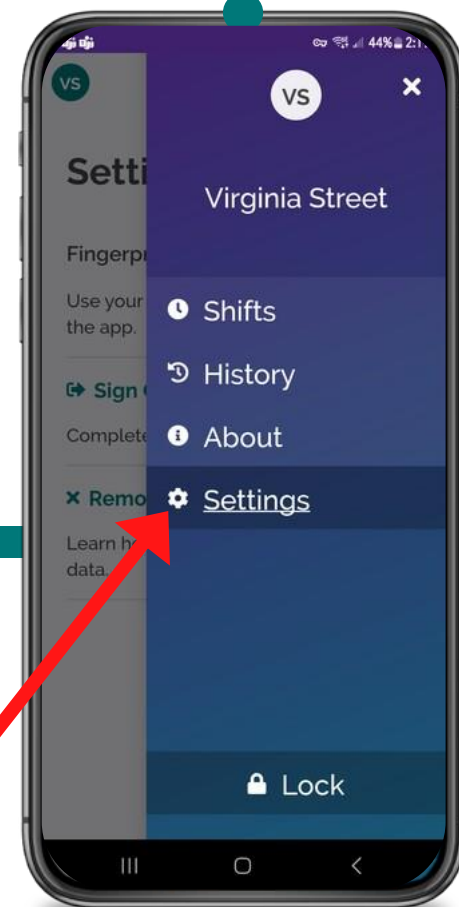
## Changing Caregiver- Signing Out of the App

Should you share the device with another Caregiver, here's how to change users



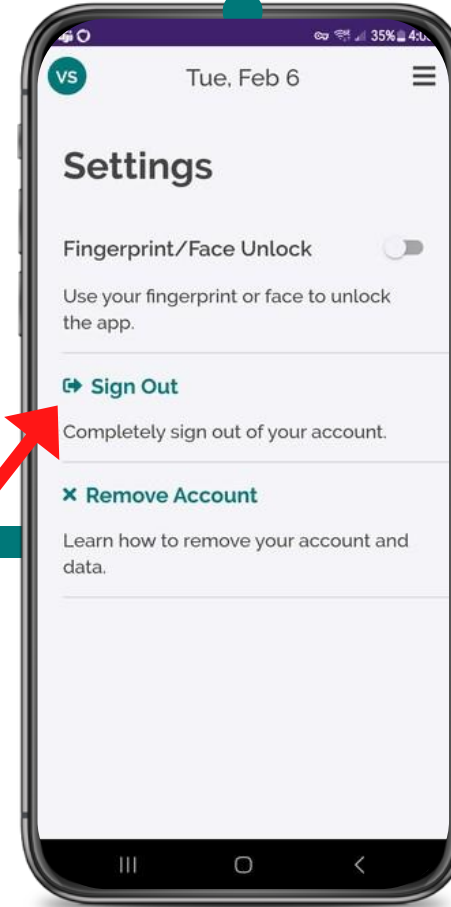
1

Tap the Menu



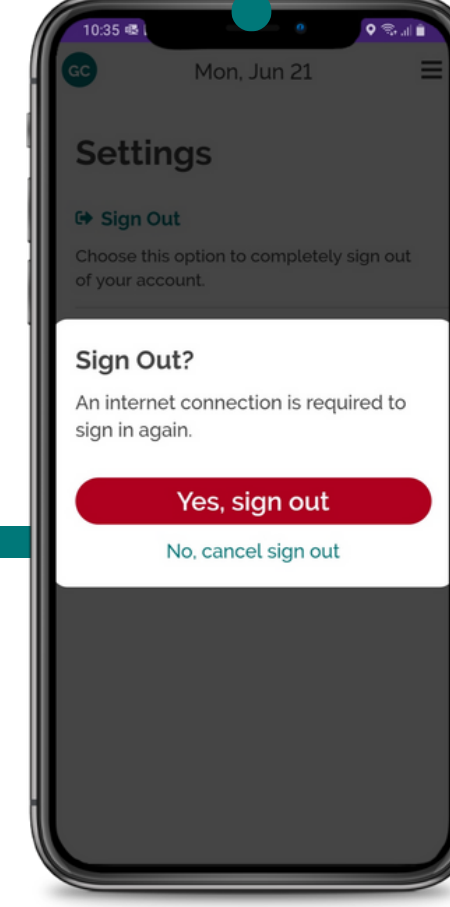
2

Tap "Settings"



3

Tap "Sign Out"



4

Tap "Yes, sign out"



5

You are signed out

# The CareAttend App

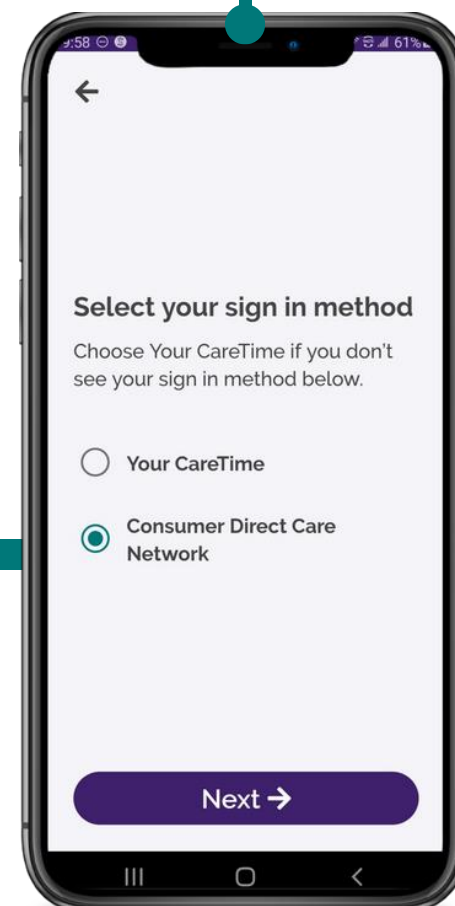
## Changing Caregiver- Signing In

You are now free to sign in as a different user



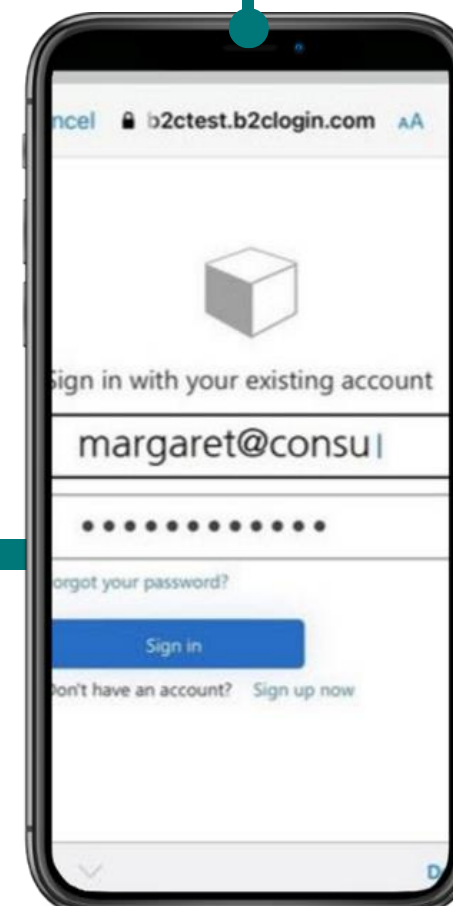
1

Tap "Sign In"



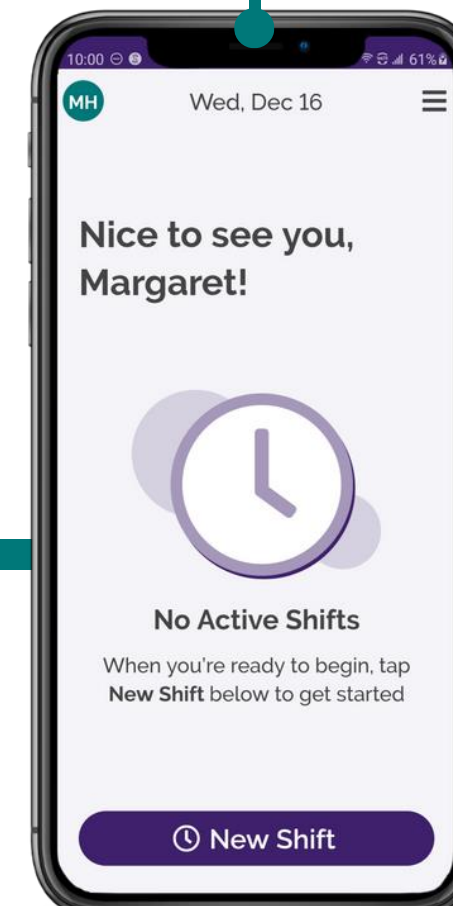
2

Select "Consumer Direct" and tap "Next"



3

Enter your details and tap "Sign in"



4

You are signed in